



RODGARD

SecureBand Wheel Safety System

MOBILITY & SAFETY

When a tire deflates, air pressure reaches a low point providing insufficient pressure to hold the tire in the correct position on the wheel. The tire bead can move around freely and drop into the wheel well resulting in loss of traction, braking and mobility. Sudden air loss can cause you to lose control of your vehicle resulting in *catastrophic consequences*.

Enter the [SecureBand wheel safety system!](#)

SecureBand is designed to simply fit over the wheel well to prevent the tire bead from moving into the well.

SecureBand Helps prevent the tire from coming off the wheel during a blowout or puncture.

SecureBand Assists the driver in maintaining control of the vehicle as a result of a flat or blowout.

SecureBand Helps maintain braking and mobility after tire deflation allowing driver to travel to a safe stop.



A division of Hutchinson Industries and a world leader in runflat technology and mobility products, Rodgard offers a cost effective solution to keep you moving after a flat tire.

With 25 years of industry leadership and innovation, you can be assured the SecureBand is as robust as our other extended mobility products. Utilizing our state of the art testing facilities and technical expertise, we designed the world's most advanced wheel safety system.

EXPERIENCE & PROVEN PERFORMANCE

COMPETITIVE ADVANTAGES

With the SecureBand, we've taken the wellfiller wheel safety system concept to another dimension keeping cost and quality as our top priorities.

KEY FEATURES INCLUDE:

- Cost Savings
- Non-corrosive
- 1 piece design vs. multi-piece design
- User-friendly installation compared to other well fillers
- Lightweight, flexible design for easy installation
- No wheel damage during installation as seen with rigid designs
- No impact on wheel balancing & driving performance
- Quick-connect feature for temporary installation
- Adjustable length and width to fit all wheel profiles
- Installed to a specified torque to assure proper fitment and performance
- Ability to supply high volume "Big Series" design ready to mount, no extra pieces



SecureBand Wheel Safety System

Vehicle Markets Served

Police and Fire Vehicles
Trailers and Caravans
Cash in Transit Vehicles
VIP Vehicles
Diplomat Vehicles
Government Agencies
Safety Conscious Drivers



TECHNICAL DATA

➤ Wheel Sizes

13"-20", one piece drop center

➤ Weight

20 - 35 oz. depending on size (.56-1kg)

➤ Stainless Steel band construction

Non-corrosive

Reinforced Fastening Mechanism, toughened stainless steel

Maximum Torque: 13 lb-ft (18 N-m)

➤ Polymer Segments

Specially formulated, heat resistant to 509°F (265°C)

Resistant to bending and deformation under severe loads

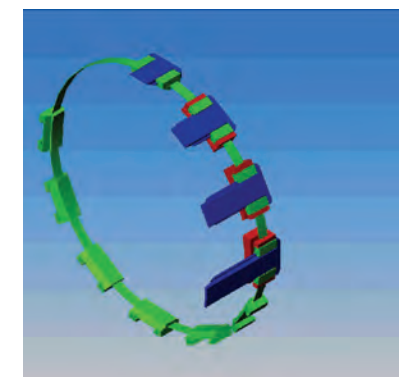
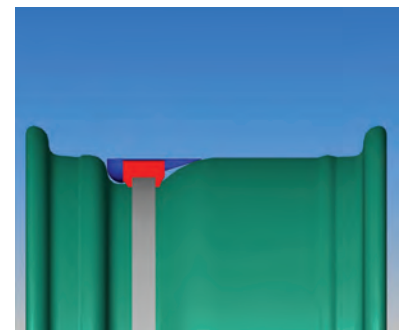
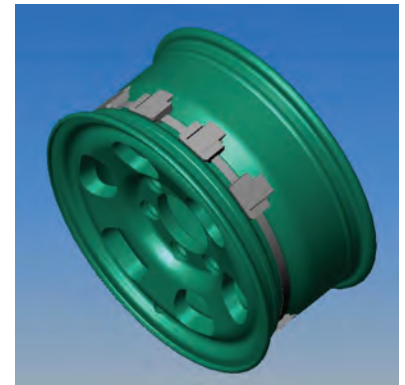
Symmetrical design allows for proper wheel balancing

Segmented design allows tire to grip for maintained traction

➤ Accepts tire pressure monitoring systems

➤ Adjustable for all drop center geometries

➤ No special tools needed for assembly



92 Msgr. Valente Drive
Buffalo NY 14206
Ph: (716) 852-1435
Fax: (716) 852-7690
email: sales@rodgard.com
www.rodgard.com