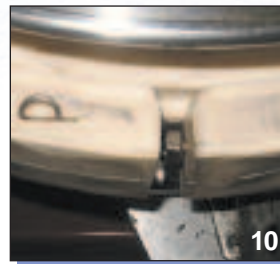
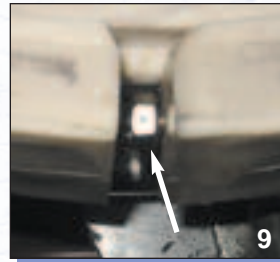
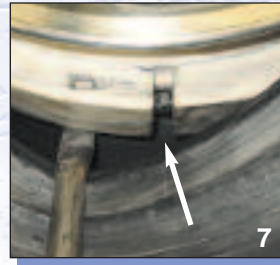




9. While pulling the tire bead back with a tire iron, use a 1/2" wrench to fasten the roller segment together so the connection is just started. Repeat for the other end (Figure 7).
10. Tighten both ends equally until the rollers have a gap approximately equal to \_\_\_\_\_ inches. Use a standard tape measure to verify gap (Figure 8).
11. Rotate the nut until the small dot is facing up as seen in Figure 9. Place the locking pin in the slot until it engages the small hole in the bolt assembly (Figure 10). It may be helpful to point a flashlight in the hole to verify the pin is engaged. Repeat for the other connection.
12. **Be sure to remove all wood blocks and tools from the inside of the tire.**
13. **Place lubricant on the outboard tire bead and install. Inflate tire to the recommended tire pressure.**
14. Balance the wheel and remove excess lubricant from the exterior of the tire.
15. Place the installation label on the wheel to specify a runflat is installed (Figure 11).
16. Mount the wheel - *You are finished!*
17. Keep the instructions and installation tools with the vehicle spare tire to facilitate future tire changes.



Please contact Rodgard with any installation questions.

## RODGARD

92 Monsignor Valente Dr. • Buffalo, NY 14206

Phone: (716) 852-1435 • Fax: (716) 852-7690

Email: [sales@rodgard.com](mailto:sales@rodgard.com)

Web: [www.rodgard.com](http://www.rodgard.com)

RGI0004 - 3/05

## FITTING INSTRUCTIONS

### Rodgard Extra Low Profile (XLP) Runflats

#### Models

15" XLP

16" XLP

17" XLP

18" XLP

19" XLP

20" XLP



RODGARD



92 Monsignor Valente Dr. • Buffalo, New York 14206

Phone: (716) 852-1435 • Fax: (716) 852-7690

Email: [sales@rodgard.com](mailto:sales@rodgard.com)

Web: [www.rodgard.com](http://www.rodgard.com)

An ISO 9001 Company

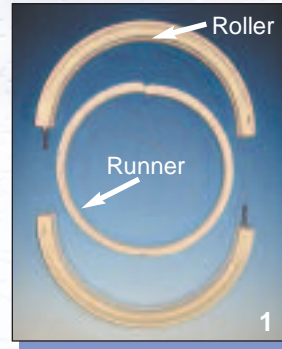
## Thank you for purchasing the Rodgard Runflat System.

This manual details the instructions to install the Rodgard runflat system on one piece drop center wheels equipped with safety humps.

### NOTICE

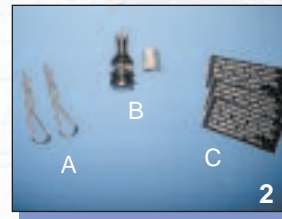
Failure to follow these instructions may result in component failure and reduced performance.

The Runflat system is installed during the tire installation. It is shipped from the manufacturer as a completely assembled unit, and consists of two major components: the Runner and Roller. (Figure 1)



### HAND TOOLS & EQUIPMENT (Figure 2)

- Locking pins (provided) (A)
- Metal tire valve (provided) (B)
- Installation Labels (provided) (C)
- 13mm Hand wrench
- Standard tubeless tire mounting tools
- Standard tire mounting machine
- Wood blocks (optional)



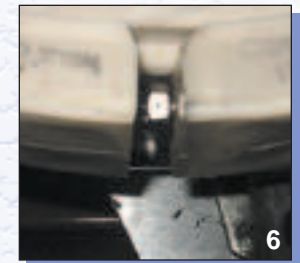
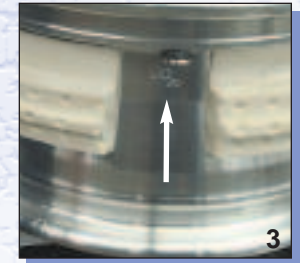
**PLEASE NOTE THAT IT IS MANDATORY FOR YOU TO FOLLOW THIS PROCEDURE OF ASSEMBLY/DISASSEMBLY AND TO USE THE SPECIFIC INSTALLATION TOOLS AS DESCRIBED IN THE BROCHURE HERETO. FAILURE TO COMPLY WITH THIS PROCEDURE AND/OR NON-USE OF THESE TOOLS CAN ADVERSELY AFFECT THE OPERATION OF HUTCHINSON'S PRODUCTS AND REDUCE THEIR LEVEL OF PERFORMANCE. CONSEQUENTLY, HUTCHINSON SHALL NOT BE HELD BY ANY OBLIGATION OF GUARANTEE AND SHALL NOT BE LIABLE TO ANY RESPONSIBILITY OR CLAIMS RESULTING FROM:**

1. INTERVENTION ON THE PRODUCT EFFECTED BY THE CUSTOMER OR BY ANY THIRD PARTY CONDITIONS (ASSEMBLY/DISASSEMBLY PROCEDURES) NOT DESCRIBED IN THE BROCHURE HERETO AND
2. NOT APPROVED BY HUTCHINSON IN WRITING PRIOR TO THE INTERVENTION, DEFECTS OR
3. DETERIORATION CAUSED BY THE FAILURE TO COMPLY WITH THE INSTRUCTIONS AND TOOLS AS DESCRIBED IN THE BROCHURE HERETO.

Please note: To help assist with installation, some photos do not depict the lubricant on the roller and runner.

For first time installation, it may be beneficial to install the system on the wheel without the tire. This will allow you to become familiar with the steps prior to full installation.

1. Separate the two roller segments by removing the locking pins and loosening the 13mm nut at each connection on the roller assembly.
2. Do not remove the factory installed lubricant. This is a special, high temperature lubricant that will not harm the tire.
3. Remove the existing rubber valve from the wheel and replace with the metal valve supplied.
4. With the outboard side of the wheel facing up, install the tire beads on the wheel. Remove the upper bead only. The lower bead can be seated or unseated based on the installer's preference.
5. Raise the upper tire bead and insert the runner into the tire and around the wheel. Be sure the side marked "OUTBOARD" is facing up. Pushing down on the tire at the valve stem location, verify the valve stem is in the opening of the runner (Figure 3). Once the runner is in place, reach inside and pull the runner up to ensure it is seated correctly.
6. With the "OUTBOARD" side up, snake the rollers into the tire as shown in Figure 4. Repeat this for the 2<sup>nd</sup> half, making sure the thread ends are in the proper orientation.
7. Place blocks of wood between the tire and rim as shown in Figure 5. Move the roller until it engages the runner. It may be helpful to place additional blocks of wood between the tire and roller to keep the roller against the runner. Rotate the roller until the hardware is roughly 90° from the valve stem.
8. Reaching inside, pull the roller segments together so the bolt threads are within the other roller half as seen in Figure 6.



Continued on page 4